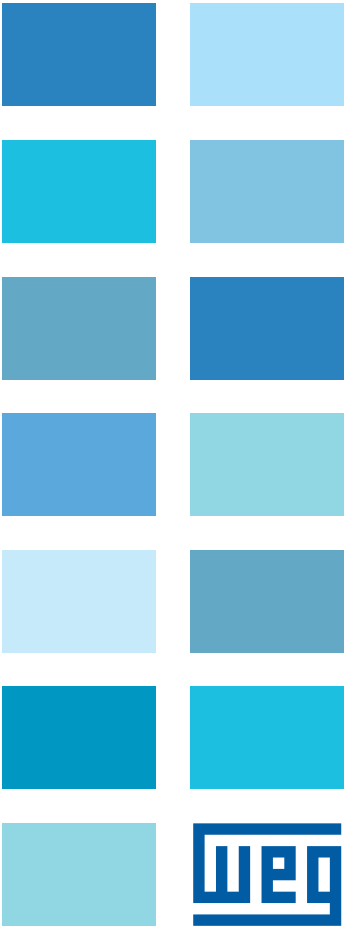
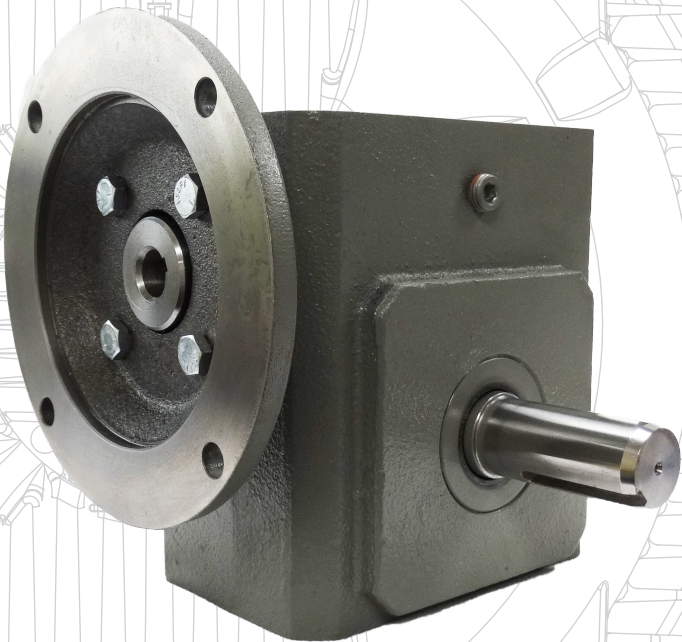
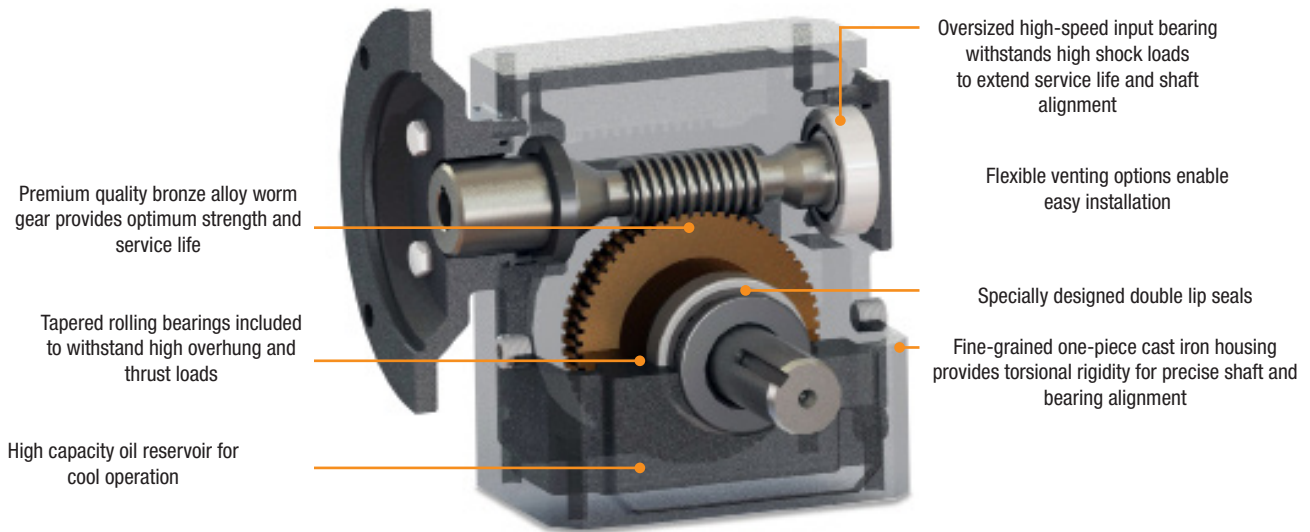


TG-90™ Speed Reducers

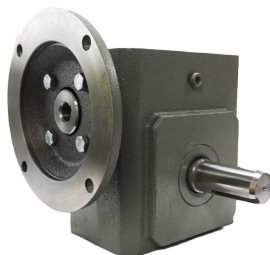


WEG's TG Line of right angle gearmotors has been a leading source to the industry for over 60 years. Designed for reliability and long life, the TG-90 comes in a variety of power ranges and center distances. Our robust design is precision engineered and manufactured to fit a variety of applications. Ideal for use on conveyors, material handling, packaging machinery, lift gates and hoists, and many others, the TG-90 proves to be a versatile choice for your gearing needs.

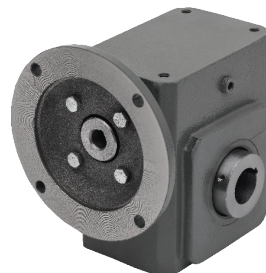


Features:

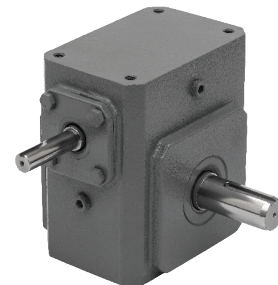
- Grey Iron right angle worm-gear reducer construction
- Forged manganese bronze worm gear for added strength
- Oversized high-speed input bearing to withstand high shock loads
- Tapered roller bearings to withstand high overhung and thrust loads
- Specially designed double lip seals reduce oil leakage
- High capacity oil reservoir for guaranteed cool operation
- Max Output torques from 400 in. lbs. to 1435 in. lbs.
- 1.0 Service Factor
- Available in 56C, 143TC quill or solid shaft input mounting
- Eight gear ratios available from 5:1 to 60:1
- Select from single, double, or hollow output shaft options
- Left, right, or bottom mounting



C-Face Input/Shaft Output



C-Face or Shaft Input/
Hollow Bore Output



Shaft Input/Shaft Output

MODEL ORDERING NOMENCLATURE INFORMATION
OUTPUT SHAFT

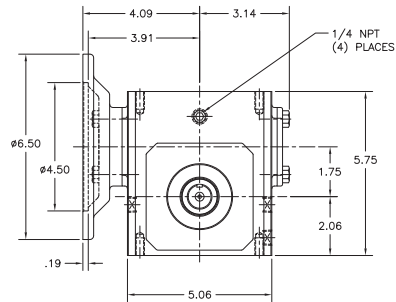
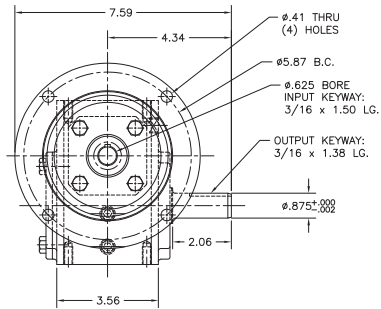
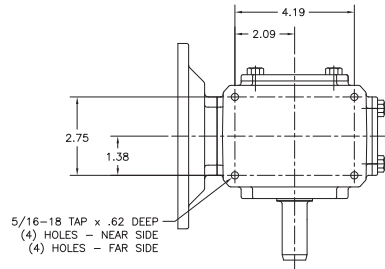
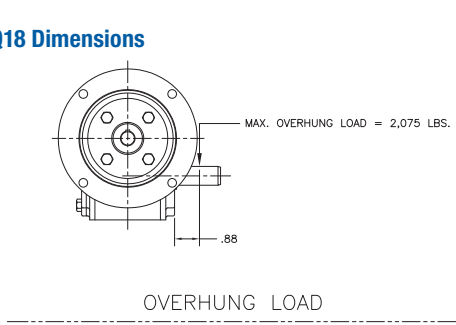
STYLE	SIZE	RATIO	ORIENTATION	MOTOR MOUNT	LUBRICATION	VENT
TQ - Quill Input	15 - 1.54" CD	5	L - Left Hand	56 -56C	N - No Oil	N - No Pressure Relief
TS- Shaft Input	18 - 1.75" CD	10	R - Right Hand	140 - 143-5TC	S - Synthetic	P - Pressure Relief
	21 - 2.06" CD	15	D - Double		L - Lube for Life	
	24 -2.37" CD	20	H - Hollow			
		30				
		40				
		50				
		60				
TQ	21	60	L	56	S	P

Model	Output Shaft Diameter	Single Output Shaft Max. Overhung Load	Dual Output Shaft Max. Overhung Load	Single Hollow Output Max. Overhung Load	Dual Hollow Output Max. Overhung Load	Dual Hollow Output Max. Overhung Load
T15	.75"	1542	771	1472	736	736
T18	.875"	2075	1030	1400	700	700
T21	1.0"	1600	800	1100	550	550
T24	1.125"	1700	850	2100	1050	1050

Nominal Output RPM @ 1750 RPM In	Gear Ratio	Continuous Duty Output Torque (In-Lbs) Based on 1750 RPM Motor									Max Input HP	Max Output Torque Rating In-Lbs	NEMA Motor Mount	Catalog Number	List Price	Multi. Symbol
		0.25	0.33	0.5	0.75	1	1.5	2	3	5						
350	5:1					167	250	334			2.59	432	140TC	TQ155L140SP	\$481	TG
						167	251	335			2.63	440	140TC	TQ185L140SP	\$498	TG
							252	336	504		3.66	615	140TC	TQ215L140SP	\$551	TG
								336	505	841	5.35	900	140TC	TQ245L140SP	\$674	TG
175	10:1				240	321	481				1.94	622	140TC	TQ1510L140SP	\$472	TG
					240	321	481				1.94	622	140TC	TQ1510R140SP	\$472	TG
					245	327	491				1.62	530	140TC	TQ1810L140SP	\$488	TG
					245	327	491				1.62	530	140TC	TQ1810R140SP	\$488	TG
						327	490	653			2.48	810	140TC	TQ2110L140SP	\$551	TG
						327	490	653			2.48	810	140TC	TQ2110R140SP	\$551	TG
							492	656	985		3.58	1175	140TC	TQ2410L140SP	\$640	TG
							492	656	985		3.58	1175	140TC	TQ2410R140SP	\$640	TG
117	15:1			230	345	460					1.45	667	56C	TQ1515L56SP	\$467	TG
				236	353	471					1.22	575	56C	TQ1815L56SP	\$484	TG
					355	474	711				1.9	900	56C	TQ2115L56SP	\$533	TG
						475	712	950			2.78	1320	56C	TQ2415L56SP	\$674	TG
88	20:1			294	442	589					1.16	683	56C	TQ1520L56SP	\$465	TG
				294	442	589					1.16	683	56C	TQ1520R56SP	\$465	TG
				303	454	606					1.04	630	56C	TQ1820L56SP	\$479	TG
				303	454	606					1.04	630	56C	TQ1820R56SP	\$479	TG
					455	607	910				1.59	965	56C	TQ2120L56SP	\$581	TG
					455	607	910				1.59	965	56C	TQ2120R56SP	\$581	TG
						612	917	1223			2.33	1425	56C	TQ2420L56SP	\$674	TG
						612	917	1223			2.33	1425	56C	TQ2420R56SP	\$674	TG
44	40:1	250	330	500							0.68	680	56C	TQ1540L56SP	\$488	TG
		250	330	500							0.68	680	56C	TQ1540R56SP	\$488	TG
		265	349	529							0.6	635	56C	TQ1840L56SP	\$500	TG
		265	349	529							0.6	635	56C	TQ1840R56SP	\$500	TG
			350	530	795						0.92	975	56C	TQ2140L56SP	\$570	TG
			350	530	795						0.92	975	56C	TQ2140R56SP	\$570	TG
				535	803	1071					1.34	1435	56C	TQ2440L56SP	\$674	TG
				535	803	1071					1.34	1435	56C	TQ2440R56SP	\$674	TG
29	60:1	324	428								0.48	623	56C	TQ1560L56SP	\$465	TG
		324	428								0.48	623	56C	TQ1560R56SP	\$465	TG
		347	458								0.45	625	56C	TQ1860L56SP	\$500	TG
		347	458								0.45	625	56C	TQ1860R56SP	\$500	TG
		351	463	701							0.67	940	56C	TQ2160L56SP	\$570	TG
		351	463	701							0.67	940	56C	TQ2160R56SP	\$570	TG
			473	717	1076						0.99	1420	56C	TQ2460L56SP	\$698	TG
			473	717	1076						0.99	1420	56C	TQ2460R56SP	\$698	TG

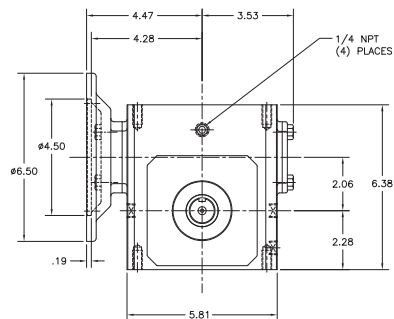
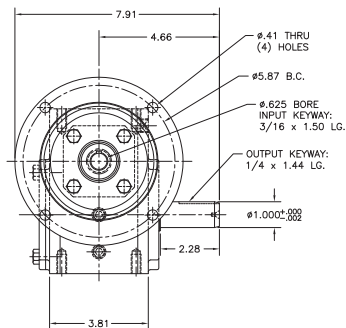
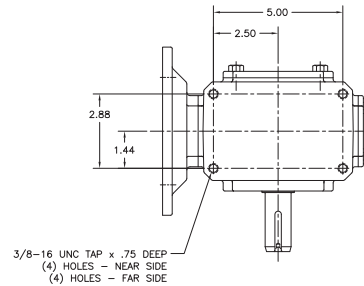
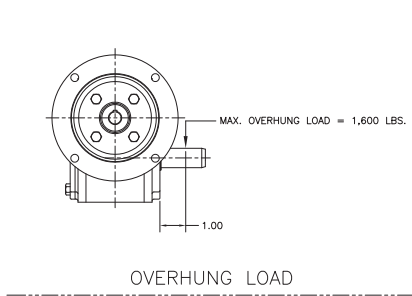
1) All data is operating based on a 1.0 Service Factor with a 1750 RPM input speed.

TQ18 Dimensions



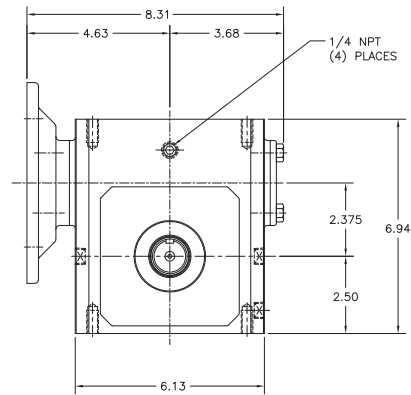
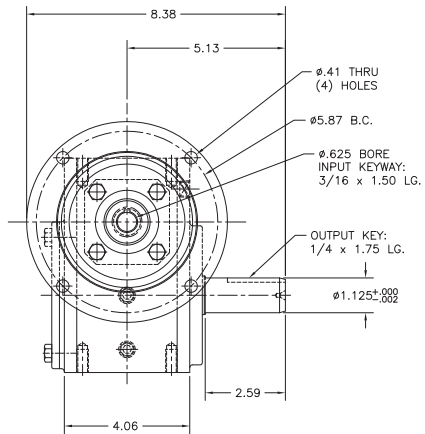
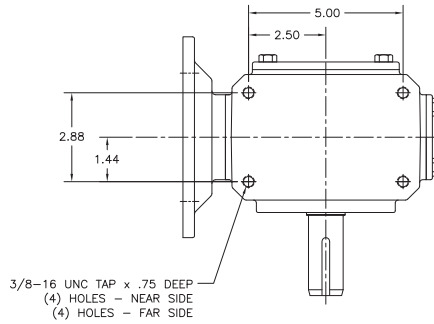
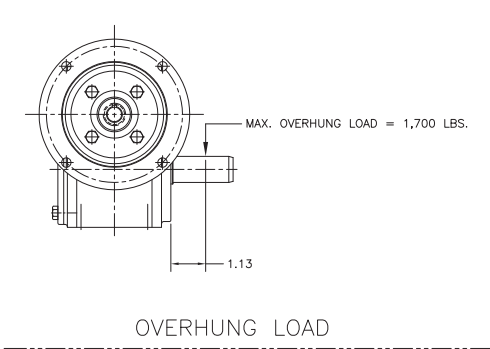
SURFACE FINISH (UNLESS OTHERWISE NOTED) 125		TOLEDO GEARMOTOR CO.	
BUSH AS SHOWN OTHERWISE		T18 REDUCER	
TOLERANCE (UNLESS OTHERWISE NOTED) 3 PLACE DEC. ±0.005 2 PLACE DEC. ±0.010 ANGLES ± 1/2°		SCALE: 1/2	PART NO.:
		DATE: 03/24/15	DRWN BY: PA/MW
		DRAWING NO. TQ18 OUTLINE	

TQ21 Dimensions



SURFACE FINISH (UNLESS OTHERWISE NOTED) 125		TOLEDO GEARMOTOR CO.	
BUSH AS SHOWN OTHERWISE		T21 REDUCER	
TOLERANCE (UNLESS OTHERWISE NOTED) 3 PLACE DEC. ±0.005 2 PLACE DEC. ±0.010 ANGLES ± 1/2°		SCALE: 1/2	PART NO.:
		DATE: 03/24/15	DRWN BY: PA/MW
		DRAWING NO. TQ21 OUTLINE	

TQ24 Dimensions



TOLEDO GEARMOTOR CO.		
T24 REDUCER		
OUTLINE		
SURFACE FINISH (UNLESS OTHERWISE INDICATED) 125 V BREAK ALL SHARP CORNERS		
TOLERANCE (UNLESS OTHERWISE INDICATED)		
SCALE: 1/2	PART NO.:	
DATE: 03/24/15	DRWN BY: PA/MW	
3 PLACE DEC. ±.005	DRAWING NO. TQ24 OUTLINE	
2 PLACE DEC. ±.010	REV	
ANGLES ± 1/2°		



WEG Electric Corp. offers the following products, and more! With a full range of IEC/NEMA Global Certifications and a full line of products, WEG can supply the right solution for your needs anywhere in the world. To learn more about WEG's products and solutions or to locate a Distributor near you, please call **1-800-ASK-4WEG** or visit **www.weg.net**.

**Low Voltage Motors,
Single and 3-Phase, 1/8 – 700HP**

- General Purpose Motors
- Explosion Proof Motors
- Crusher Duty Motors
- IEC Tru-Metric Motors
- Pump Motors including JP/JM
- P-Base Pump Motors
- Oil Well Pumping Motors
- Pool & Spa Motors
- Brake Motors
- Compressor Duty Motors
- Farm Duty Motors
- Poultry Fan Motors
- Auger Drive Motors
- IEEE 841 Motors
- Stainless Steel Wash Down Motors
- Saw Arbor Motors
- Cooling Tower Motors
- Commercial HVAC Motors
- Pad Mounted Motors
- Vector Duty Motors

Large Electric Motors

- Low Voltage 3-phase motors up to 2,500HP
- Motors up to 70,000HP and 13,200V
- Wound Rotor Systems (including starters) up to 70,000HP and 13,200V
- Synchronous Motors up to 70,000HP and 13,200V
- Explosion proof motors (Ex-d) up to 1,500kW and 11kV
- Ex-n, Ex-e, Ex-p motors

Variable Frequency Drives

- Low Voltage 1/4 to 2500HP, 230V – 480V
- Medium Voltage 500-8000HP
- Multi-pump systems
- NEMA 4X
- Dynamic braking resistors
- Line and load reactors
- Plug and play technology
- Network communications: Profibus-DP, DeviceNet, Modbus-RTU
- PLC functions integrated
- Complete line of options and accessories

Soft Starters

- 3-1500HP
- Oriented start-up
- Built-in bypass contactor
- Universal source voltage (230-575V, 50/60Hz)
- Network communications: Profibus-DP, DeviceNet, Modbus-RTU
- Complete Line of options and accessories
- MV Soft-starter 3.3kV, 4.16kV: up to 3500HP, Withdrawable Power Stacks, & 8x PT100 Temperature monitoring

Controls

- Mini – Contactors
- IEC Contactors
- Thermal Overload Relays
- Manual Motor Protectors
- Molded Case Circuit Breakers
- Smart Relays
- Enclosed Starters: combination & non-combination,
- Pushbuttons & Pilot Lights
- Timing & Motor Protection Relays
- Terminal Blocks

Custom Panels

- Custom configured to your specification.
- NEMA 1, 12, 3R, 4 and 4X cabinets
- Quick delivery of preconfigured drives and soft starters
- UL 508 certified
- Low Voltage (230-460)
- Made in the U.S.A.

Generators

- Brushless Synchronous Generators for diesel gen-sets up to 4,200kVA
- Hydro-generators up to 25,000kVA
- Turbo-generators up to 62,500kVA

Power Transformers

- Built and engineered in North America
- Voltages < 500kV
- Ratings 5-300MVA
- Station class, oil filled, round core, copper windings
- Special configurations and designs available!
- Ask your WEG Sales Representative for details.
- Designed, built, and engineered to ANSI standards.

Custom Solution Package Sales

- WEG can package any of its products for ease of sale! Enjoy a single point of contact for the entire package of products and assistance from quote through after-sales support. Ask your WEG Sales Representative for details.



WEG Electric Corp.
6655 Sugarloaf Parkway
Duluth, GA 30097
Phone: 1-800-ASK-4WEG
web: www.weg.net

